

6 Ansdell Avenue, Chorlton, Manchester, M21 8TP



JP & Brimelow
ESTATE AGENTS



3 1 2

VIDEO TOUR AVAILABLE An attractive & immaculate, THREE DOUBLE BEDROOM, box-bay, mid terrace property. This charming period property is located on a highly desirable tree-lined road, off Sandy Lane, here in Chorlton.

Within walking distance to the cafe society on Beech Road with its array of shops/bars/restaurants, both Chorlton & Beech Road Park are nearby, the Metrolink station on St Werburghs Road giving you direct access to Media City/Manchester Centre and Manchester International Airport.

The well planned-accommodation consist of; a porch, a welcoming entrance hall, a good-sized lounge benefitting from a box bay window to the front aspect, a dining room with views and access out into the rear courtyard, a useful under stairs storage cupboard, a stylish and modern fully fitted kitchen complete with crittall aluminium doors allowing access into the enclosed courtyard.

Stairs leading to the first-floor landing reveal three good sized bedrooms, two benefitting from built in wardrobes. A white three-piece shower room completes this delightful property.


The property benefits from gas fired central heating, an alarm system, high ceilings, ceiling coving and picture rails, and a rear enclosed courtyard.

£475,000





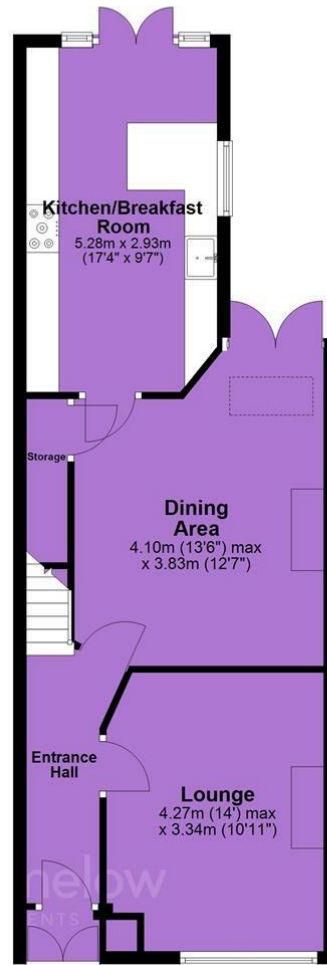
EPC Chart

Energy Efficiency Rating		Current	Potential
Very energy efficient - lower running costs			
(92 plus)	A		
(81-91)	B		
(69-80)	C		
(55-68)	D		
(39-54)	E		
(21-38)	F		
(1-20)	G		
Not energy efficient - higher running costs			
England & Wales			EU Directive 2002/91/EC 



Tenure: Freehold Council Tax Band: B

Ground Floor



First Floor



JP & Brimelow Estate Agents Ltd
430 Barlow Moor Road, Manchester, M21 8AD
Tel: 0161 8822233
E: sales@jpbrimelow.co.uk www.jpandbrimelow.co.uk



JP & Brimelow
ESTATE AGENTS

NOTICE: JP & Brimelow Estate Agents Ltd for themselves and for the vendors or lessors of this property whose agents they are give notice that:

- (i) the particulars are set out as a general outline only for the guidance of intending purchasers or lessees, and do not constitute, nor constitute part of, an offer or contract;
- (ii) all descriptions, dimensions, references to the condition and necessary permissions for use and occupation, and other details are given in good faith and are believed to be correct but any intending purchasers or tenants should not rely on them as statements or representations of fact but must satisfy themselves by inspection or otherwise as to the correctness of each of them;
- (iii) no person in the employment of JP & Brimelow Estate Agents Ltd has any authority to make or give any representation or warranty whatever in relation to this property.

jpandbrimelowstateagents

@jpandbrimelow

